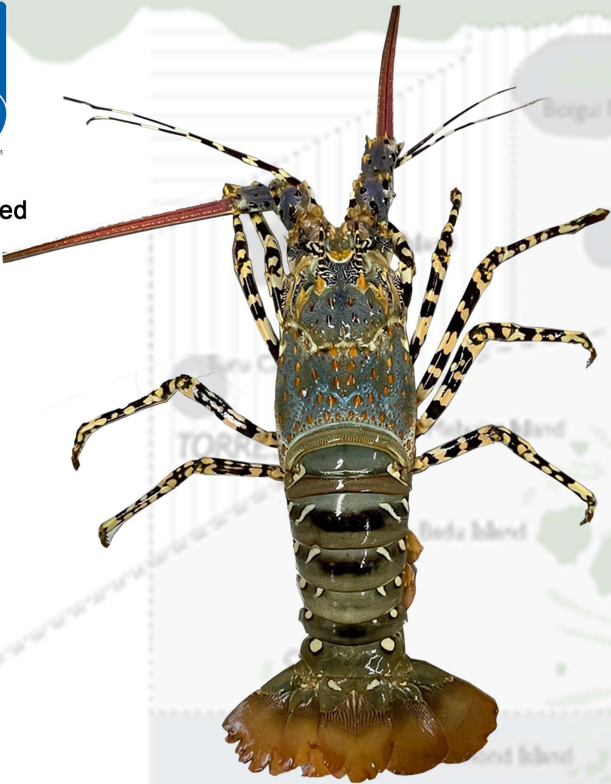


Panulirus ornatus



MSC Certified Lobster



Dispela em MSC tok orait Lobster



ENGLISH VERSION

The ornate rock lobster is a large specimen with a blue-green carapace. It is characterized by its large frontal horns, as well as distinct patterning with stripes and spots of various colors throughout its body. Its walking legs have intricate stripe patterns, making it appear almost spider-like.

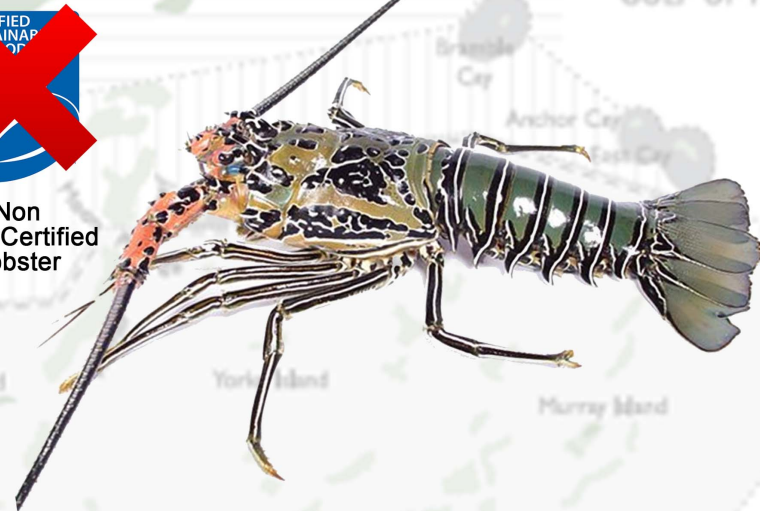
TOK PISIN VERSION

Oi i save wokim ol naispela bilas long ol ston, na ol i gat traipela skin bilong ol i kala blu-grin. Em i gat ol bikpela kom long pes bilong em, na tu, long bodi bilong em i gat ol mak i gat kain kain kala. Oi lek bilong en i gat ol naispela mak bilong en, na dispela i mekim na em i luk olsem wanpela spaida.

Panulirus versicolor



Non MSC Certified Lobster



Displa em ino MSC tok orait Lobster

ENGLISH VERSION

Panulirus versicolor has no claws, two spiny rostra over the eyes, and two pairs of large antennae, like all spiny lobsters. The first pair of antennae are double ended, the second hard and spiny, both are usually white. The carapace is cylindrical, made of chitin, very solid and not extensible. The coloration is white, pink and black, with horizontal bands and a reticule. The abdomen is green with transverse black and white bands. The legs are dark blue to black with white stripes and the tail is blue-green. The tail is made up of five yellowish appendages yellowish at its base, with an apical blue area and a white margin. Also juveniles have a bright blue coloration with white lines, while the base of the antennae is white instead of pink.

TOK PISIN VERSION

Panulirus versicolor i no gat pinga bilong lek, na tupela rop i gat nil i stap antap long ai bilong en, na tupela bikpela anten, wankain olsem ol lobster i gat nil. Namba wan tupela anten i gat tupela hap bilong en, na namba tu anten i strong na i gat ol rop i gat nil long en, na tupela i waitpela. Oi i wokim skin bilong en olsem silindri, ol i wokim long kitin, na em i strong tumas na i no inap op. Oi i gat waitpela, pink na blakpela kala, na ol i gat ol liklik mak long sait na ol i gat retikul. Bel bilong en i gat grinpela kala na ol blak na waitpela mak i go i kam long baksait bilong en. Lek bilong en i waitpela, na tel bilong en i blu-grin. Tel bilong en i gat 5-pela hap bilong en i gat kala olsem yelopela, na i gat wanpela blupela hap na waitpela hap. Na tu, ol yangpela i gat waitpela mak na ol i gat waitpela kala, na as bilong ol anten i waitpela na i no pink.