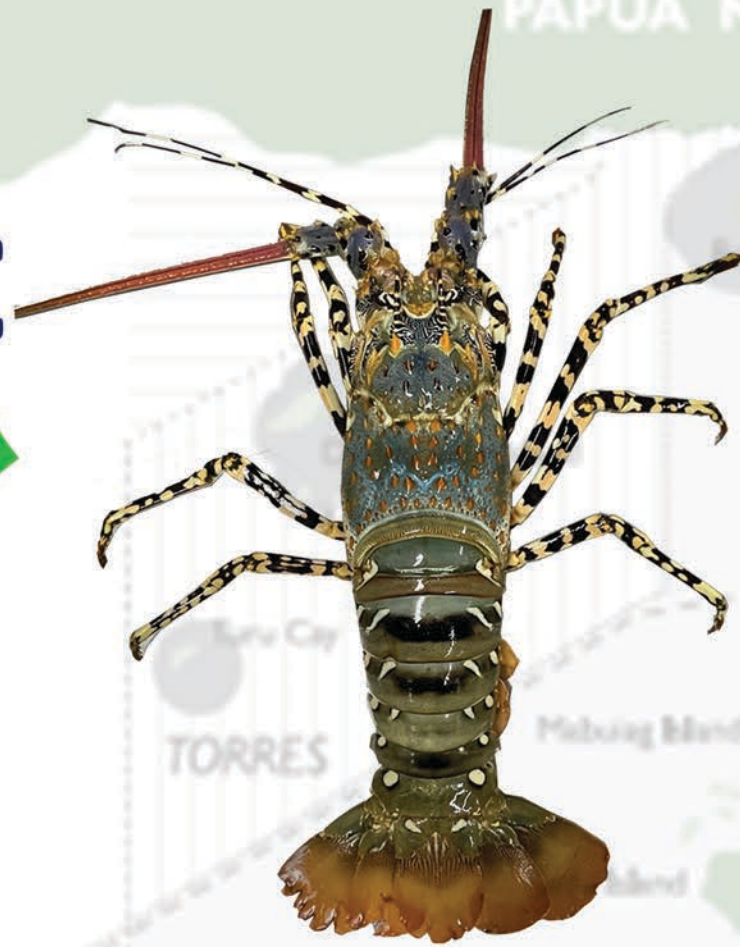


# Panulirus ornatus

**MSC**

MSC Certified Lobster



**MSC**

Displa em MSC Certified Lobsta



## ENGLISH

**Panulirus ornatus (Ornate Tropical Rock Lobster)**

- Blue-green colour on the topside of the head (carapace) with small brown spines
- Large horn-like spines (frontal horns) protruding ontop of where the eyes are distinct patterning with spots of black and brown.
- Walking legs and abdomen are brownish or greenish grey having contrasting dark and light coloration resulting in banded or marbled/ spotted appearance.

## TOK PISIN

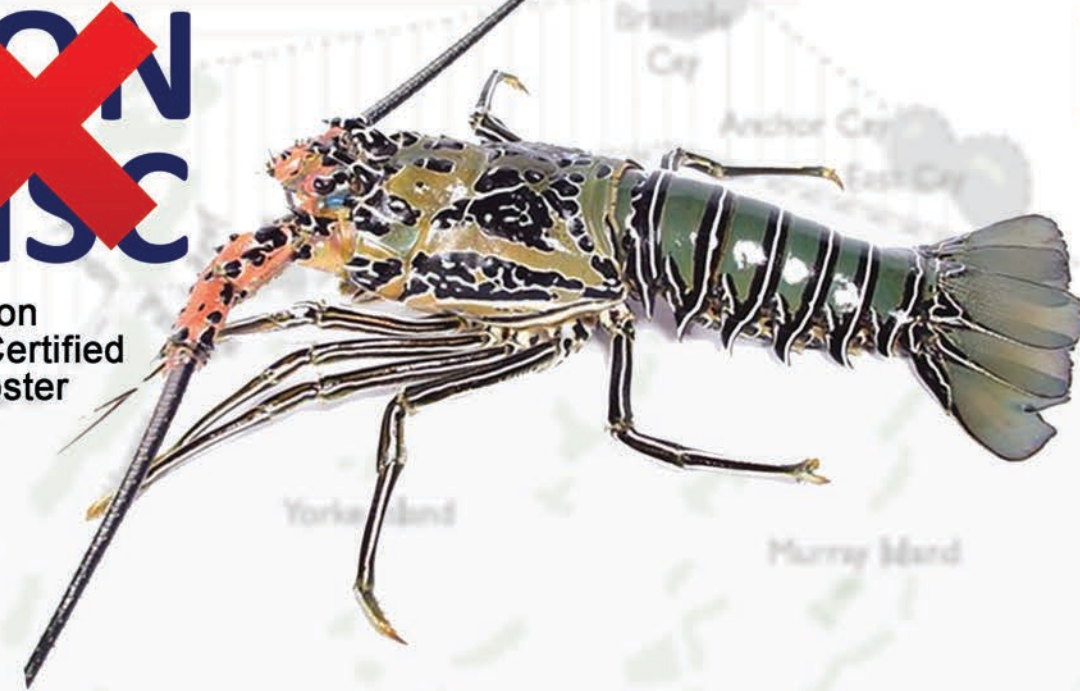
**Panulirus ornatus (Ornate Tropical Rock Lobster)**

- Kala bilong en i blu-grin na i gat ol liklik rop i gat nil long en
- Ol traipela rop i luk olsem kom bilong bulmakau (long pes) i stap antap long ai i gat ol mak i stap long skin na i blak na braun
- lek na bel bilong en i gat kala olsem braunpela o grinpela gray, na kala bilong en i lait na tudak, na i luk olsem ol i gat ol mak long skin

# Panulirus versicolor

~~**NON MSC**~~

Non MSC Certified Lobster



~~**NON MSC**~~

Displa em ino MSC Certified Lobsta

## ENGLISH

**Panulirus versicolour (Painted Rock Lobster)**

- Long black and white stripes along the legs
- Green abdomen with white and black stripes
- Are usually smaller than Ornate Rock Lobster
- Carapace (top of the head) with a characteristic pattern of dark blue areas with white lines.

## TOK PISIN

**Panulirus versicolour (Painted Rock Lobsta)**

- Ol longpela blak na waitpela mak i stap long lek
- Bel i gat kala grin na ol waitpela na blakpela mak
- Ol i liklik moa long ol lobsta
- Long het bilong em i gat ol blupela mak i gat ol waitpela mak.



National Fisheries Authority  
PO Box 2016, Port Moresby National Capital District  
Papua New Guinea



Fishing Industry Association (PNG) Inc.  
PO Box 1103, Boroko, National Capital District  
Papua New Guinea