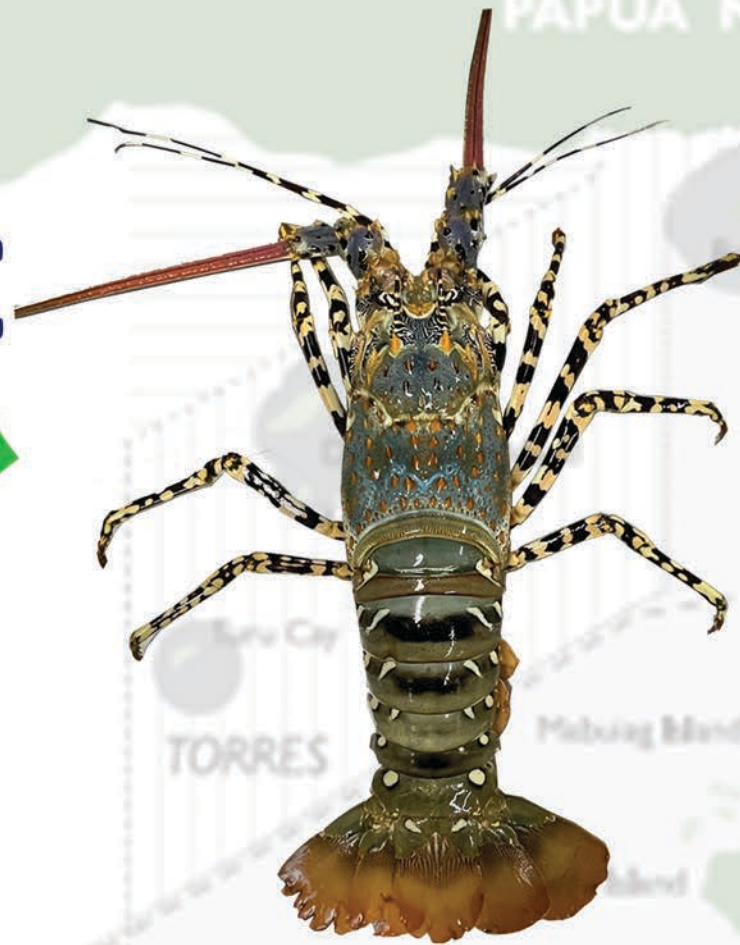


Panulirus ornatus

MSC

MSC Certified Lobster



MSC

MSC Certified Kaiaro



ENGLISH

Panulirus ornatus (Ornate Tropical Rock Lobster)

- Blue-green colour on the topside of the head (carapace) with small brown spines
- Large horn-like spines (frontal horns) protruding ontop of where the eyes are distinct patterning with spots of black and brown.
- Walking legs and abdomen are brownish or greenish grey having contrasting dark and light coloration resulting in banded or marbled/ spotted appearance.

KIWAI

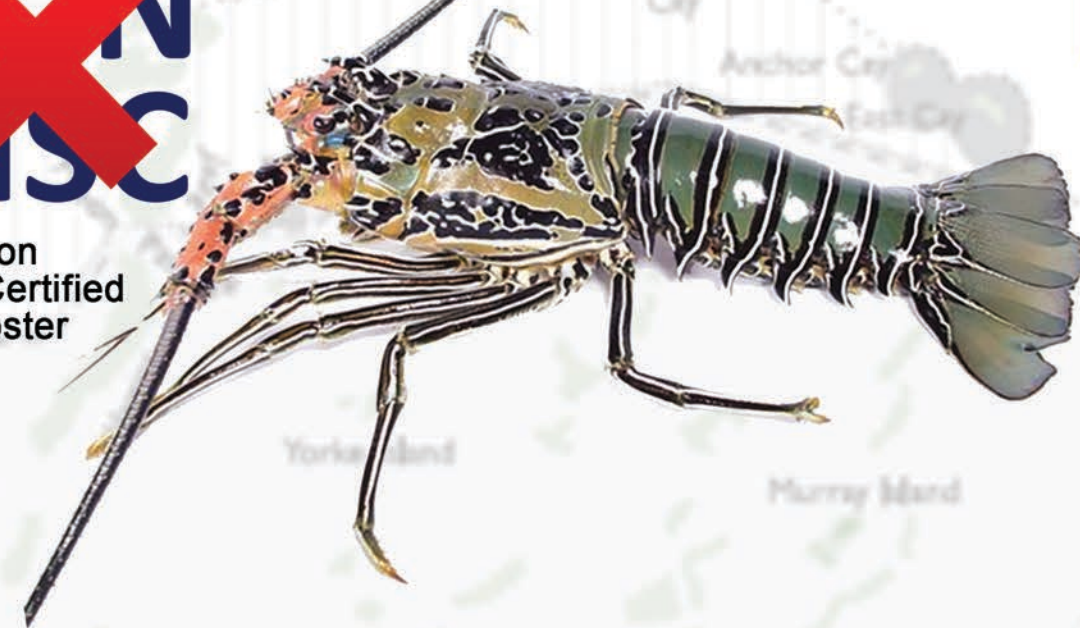
Epuru na ere'ago, kea harubi owerai to paina 'Ornate Tropical Rock Lobster,'

- Nou epuru kako wa, kea harubi owerai to ereago nou tama Blue geda Brown naru babigo
- Damari etema ohu rudo gobo'i netoa naru toribo
- Wibu geda kopo titi rautu
- Hairo geda bodoro wato, gobo'ie kea harubi owerai to ereago brownish geda greenish grey titi aiwa waimo wibugo.

Panulirus versicolor

~~**NON
MSC**~~

Non
MSC Certified
Lobster



~~**NON
MSC**~~

Pai MSC Kaiaro

ENGLISH

Panulirus versicolour (Painted Rock Lobster)

- Long black and white stripes along the legs
- Green abdomen with white and black stripes
- Are usually smaller than Ornate Rock Lobster
- Carapace (top of the head) with a characteristic pattern of dark blue areas with white lines.

KIWAI

Ata na ereago kea harubi owerai to paina Painted Rock Lobster, Wibu Titi rautu no'ora kaiaro

- Ni kaiaro nou pusi mabu wato, kopo titi gesehe wibu geda kea tama rautu
- Hairo wato gobo'ie wibu geda kea titi, nou sano paha wato, kopo tama.
- Nou bodoro wato gobo'ie kea harubi owerai to ereago greenish wibu geda kea tama
- Epuru kako wato gobo'ie etere etere titi, oromo obo minoito.



National Fisheries Authority
PO Box 2016, Port Moresby National Capital District
Papua New Guinea



Fishing Industry Association (PNG) Inc.
PO Box 1103, Boroko, National Capital District
Papua New Guinea